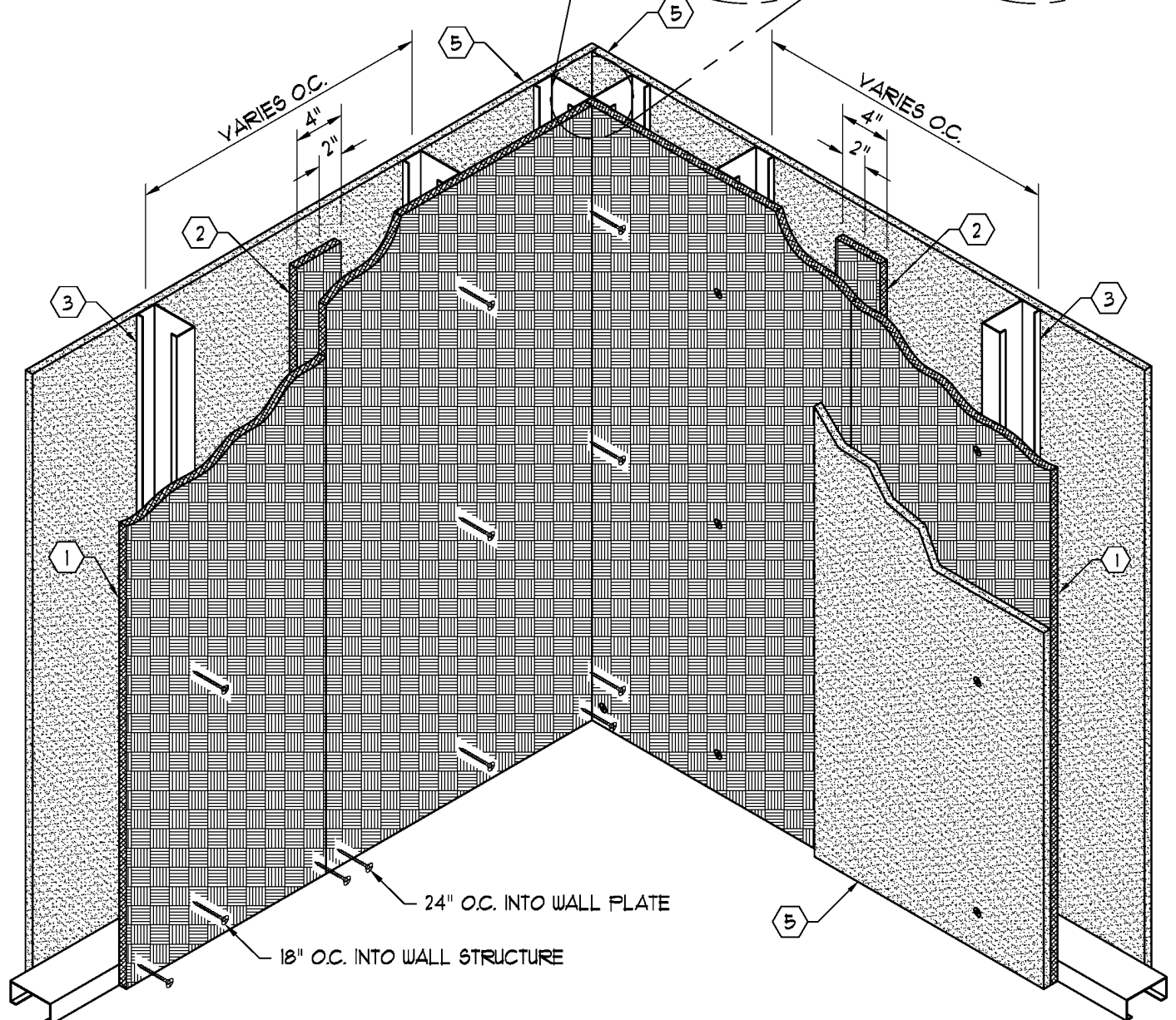
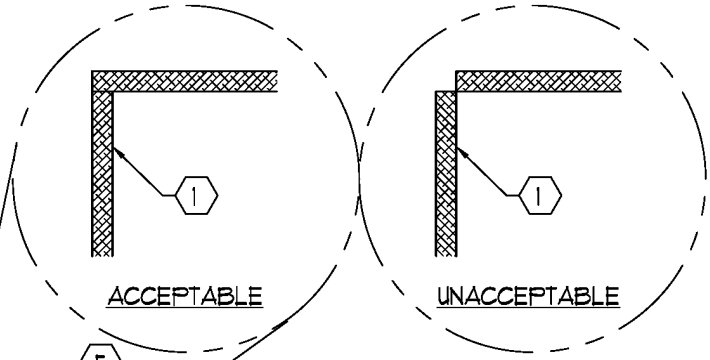


NOTES:

- ① UL LISTED ARMORCO® BULLET RESISTANT COMPOSITES PANEL
- ② BATTEN STRIP (CUT FROM COMPOSITES FULL SHEET)
- ③ STEEL OR WOOD STUDS (BY OTHERS)
- ④ JOINTS BETWEEN COMPOSITE PANELS MUST BE KEPT AS TIGHT AS POSSIBLE
- ⑤ DRYWALL PANEL (BY OTHERS)



(BULLET RESISTANT PANEL SHOULD BE INSTALLED WITH FULL LOAD RESTING SECURELY AGAINST SLAB. ANCHOR TO WALL PLATE AND WALL STRUCTURE AS SHOWN.)